



**UTILITY LOCATING
POTHOLE DEPTH
REPORT BTL
P39-3-1950**

**SPECIALLY PREPARED
FOR:**



Vacaville, California

TABLE OF CONTENTS

1. Project Map
2. Tabulation
3. Record of Test Hole Date Sheets

**Bess Testlab Inc.
2463 Tripaldi Way
Hayward, CA 94545
Submitted By: Felix Alvarez
Office: (408) 988-0101
Email: falvarez@besstestlab.com**

STATE OF CALIFORNIA - DEPARTMENT OF TRANSPORTATION
Caltrans
DESIGN
FUNCTIONAL SUPERVISOR
CALCULATED BY
CHECKED BY
PETER BATIO
JAMES LEY
REVISED BY
DATE
A
ABZY

NOTE:
FOR ACCURATE RIGHT OF WAY DATA, CONTACT
RIGHT OF WAY ENGINEERING AT THE DISTRICT OFFICE.

CURVE DATA						
No. #	R	Δ	T	L	N	E
1	483.74	17°34'53"	74.81	148.44	1,875,520.88	6,552,513.75
2	525.88	17°35'15"	81.35	161.42	1,875,980.03	6,551,614.58
3	2,200.00	16°29'06"	318.69	632.98	1,875,637.87	6,554,321.03

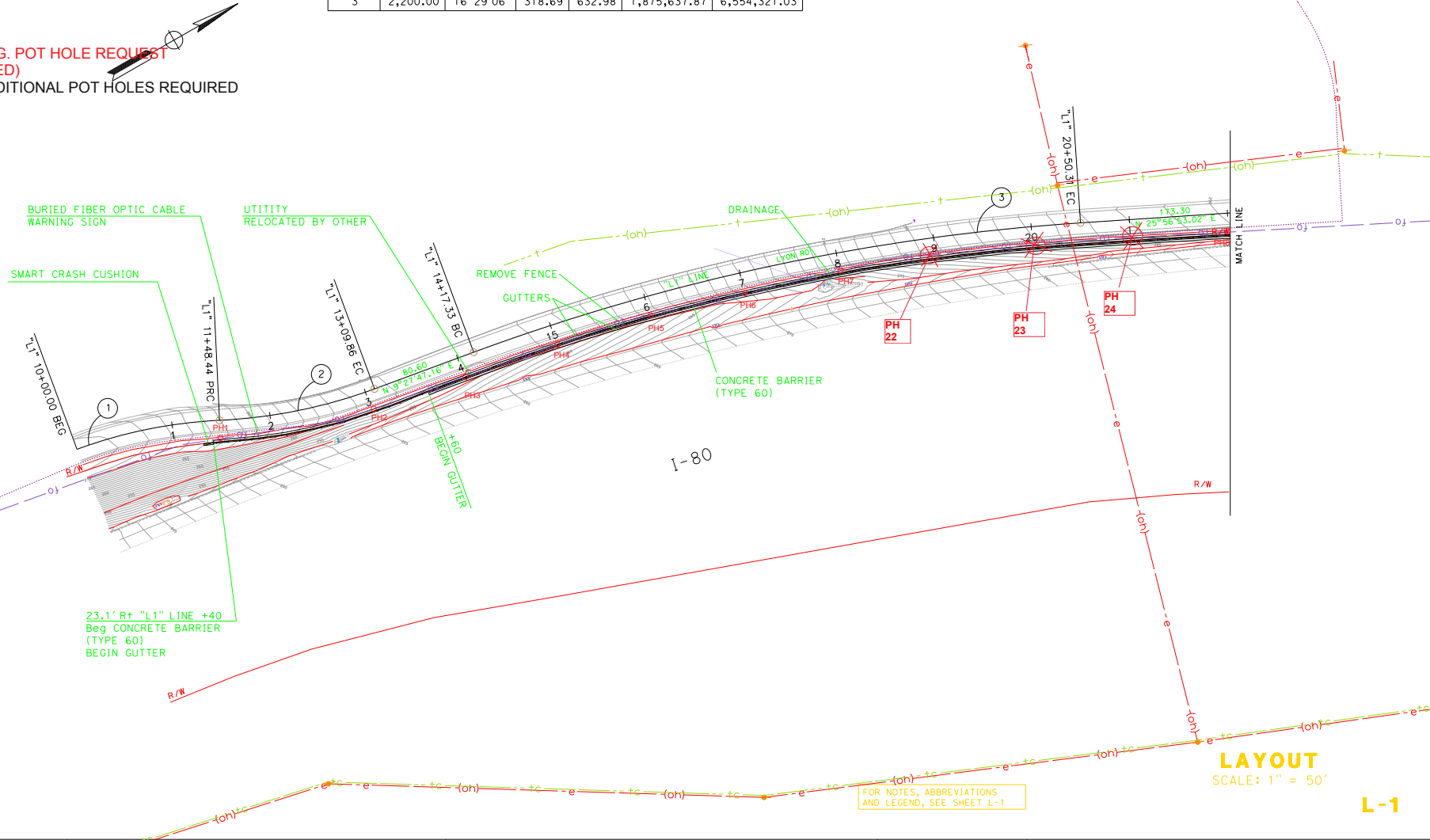
LEGEND
PH# -- ORIG. POT HOLE REQUEST
(COMPLETED)
APH# -- ADDITIONAL POT HOLES REQUIRED

Dist	COUNTY	ROUTE	POST MILES TOTAL PROJECT	SHEET NO.	TOTAL SHEETS
04	SOL	80	22.1/23.0	A	ZYX

REGISTERED CIVIL ENGINEER DATE
X-X-XX
PLANS APPROVAL DATE

THE STATE OF CALIFORNIA OR ITS OFFICERS
OR AGENTS SHALL NOT BE RESPONSIBLE FOR
THE ACCURACY OR COMPLETENESS OF SCANNED
COPIES OF THIS PLAN SHEET.

REGISTERED PROFESSIONAL ENGINEER
No.
Exp.
CIVIL
STATE OF CALIFORNIA



STATE OF CALIFORNIA - DEPARTMENT OF TRANSPORTATION	FUNCTIONAL SUPERVISOR	CALCULATED-DRAWN BY	DESIGN	REVISOR	REVISION
St. Gilberts	DESIGN	PETER BATIO	A	ABZY	A
		CHECKED BY		DATE	
		JAMES LEY			

NOTE:
FOR ACCURATE RIGHT OF WAY DATA, CONTACT
RIGHT OF WAY ENGINEERING AT THE DISTRICT OFFICE.

DIST	COUNTY	ROUTE	POST TOTAL MILES	PROJECT SHEET NO.	TOTAL SHEETS
04	SOL	80	22.1/23.0	A	ZYX
REGISTERED CIVIL ENGINEER			DATE		
X-X-XX			PLANS APPROVAL DATE		

THE STATE OF CALIFORNIA OR ITS OFFICERS OR AGENTS SHALL NOT BE RESPONSIBLE FOR THE ACCURACY OR COMPLETENESS OF SCANNED COPIES OF THIS PLAN SHEET.

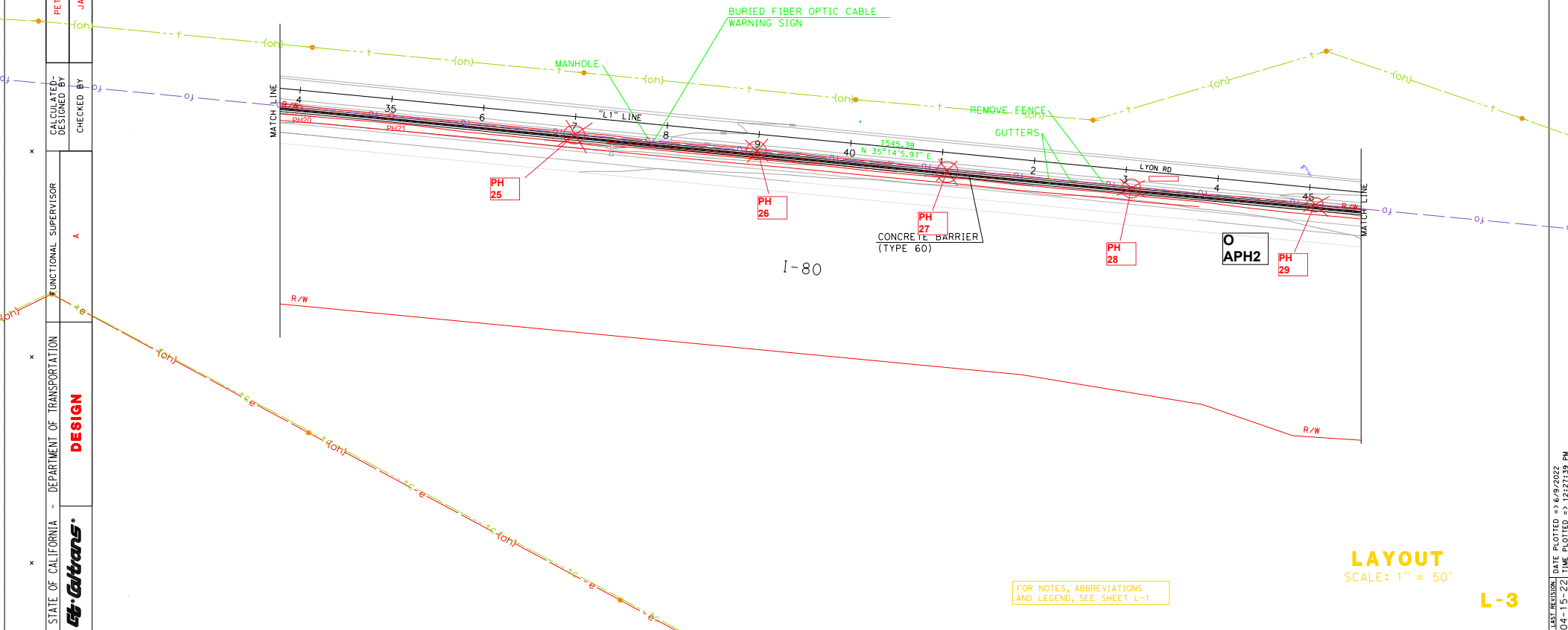
REGISTERED PROFESSIONAL ENGINEER

No. _____

EXP. _____

CIVIL

STATE OF CALIFORNIA



FOR NOTES, ABBREVIATIONS
AND LEGEND, SEE SHEET L-1

LAYOUT
SCALE: 1" = 50'

L-3

BORDER LAST REVISED 8/5/2020

USERNAME =>
DGN FILE => ...L-3_4K300.dgn

RELATIVE BORDER SCALE
IS IN INCHES

0 1 2 3

UNIT 0753

PROJECT NUMBER & PHASE

0417000293

LAST REVISION: DATE PLOTTED => 6/9/2022
04-15-22 TIME PLOTTED => 12:27:39 PM

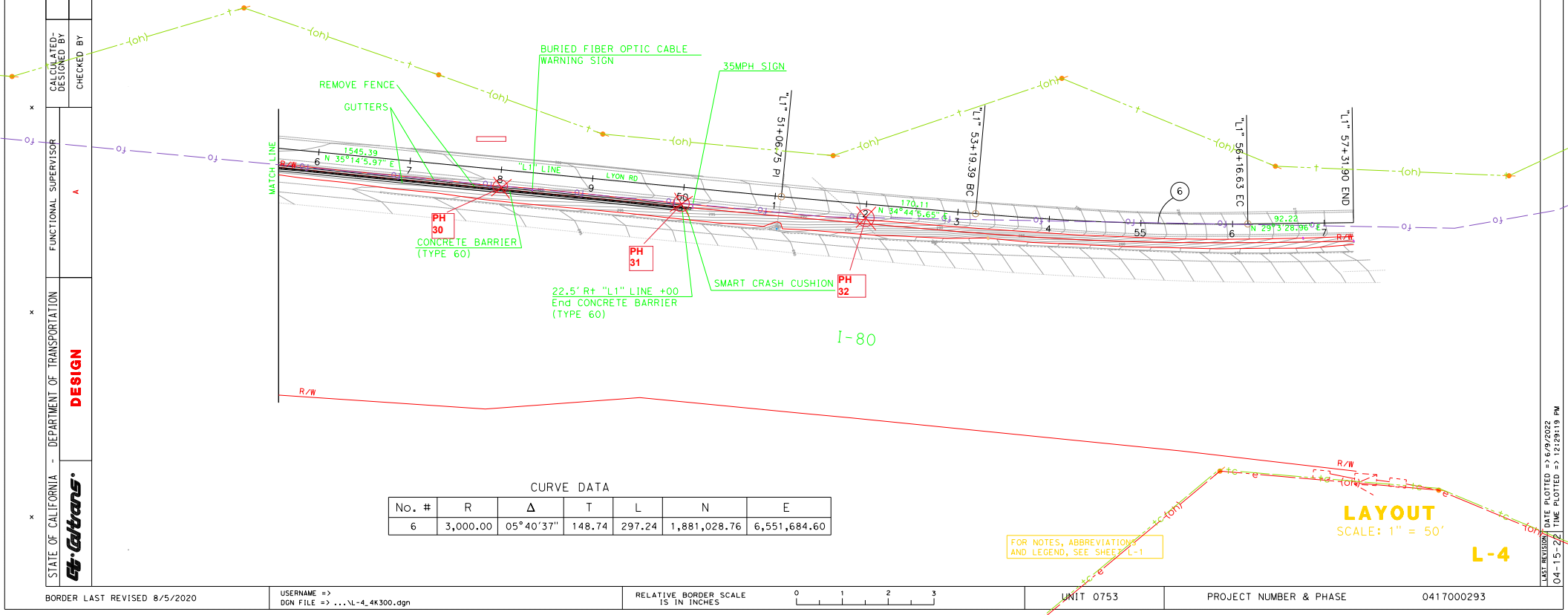
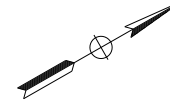
STATE OF CALIFORNIA - DEPARTMENT OF TRANSPORTATION	DESIGN	FUNCTIONAL SUPERVISOR	CHECKED BY	REVISOR	DATE	REVISION
Caltrans		A		PETER BATIO		ABZY

NOTE:
FOR ACCURATE RIGHT OF WAY DATA, CONTACT
RIGHT OF WAY ENGINEERING AT THE DISTRICT OFFICE.

DIST	COUNTY	ROUTE	POST MILES TOTAL PROJECT	SHEET TOTAL No.	TOTAL SHEETS
04	SOL	80	22.1/23.0	A	ZYX

REGISTERED CIVIL ENGINEER	DATE
X-X-XX	
PLANS APPROVAL DATE	

THE STATE OF CALIFORNIA OR ITS OFFICERS OR AGENTS SHALL NOT BE RESPONSIBLE FOR THE ACCURACY OR COMPLETENESS OF SCANNED COPIES OF THIS PLAN SHEET.



CURVE DATA						
No. #	R	Δ	T	L	N	E
6	3,000.00	05°40'37"	148.74	297.24	1,881,028.76	6,551,684.60

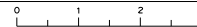
FOR NOTES, ABBREVIATIONS
AND LEGEND, SEE SHEET L-1

LAYOUT
SCALE: 1" = 50'

BORDER LAST REVISED 8/5/2020

USERNAME =>
DGN FILE => ...L-4_4K300.dgn

RELATIVE BORDER SCALE
IS IN INCHES



UNIT 0753

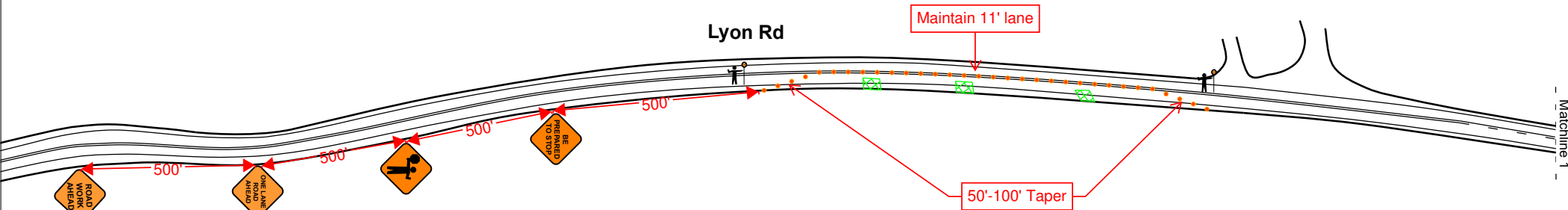
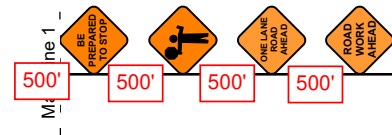
PROJECT NUMBER & PHASE

0417000293

DATE PLOTTED => 6/9/2022
TIME PLOTTED => 12:23:13 PM
LAST REVISION




*Any traffic control devices outside the City's right-of-way requires approval from Solano County prior to starting work



Traffic control devices set up as rural roadway / 55 MPH

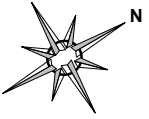
Permit Valid Through 4/05/2024

	Contractor: Bess Teslab	Start Date: -	Drafted by: <u>SF</u>	Phase: <u>1 of 3</u>	Civil Engineer Stamp	Acknowledgement of Approval Signature: _____ Date: _____
	Field Contact: -	End Date: -	Scale: _____ Plan Number: _____ Job Number: _____ Permit #: _____			
	Contact Number: -	Work Hours: -				

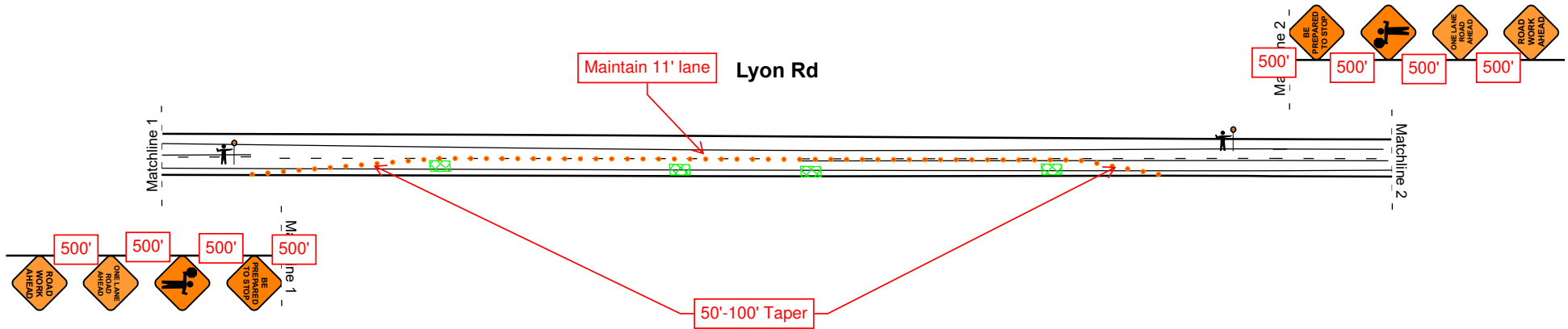
Bess Teslab

Lyon Road

EP 23-52



*Any traffic control devices outside the City's right-of-way requires approval from Solano County prior to starting work



Traffic control devices set up as rural roadway / 55 MPH

Permit Valid Through 4/05/2024



Contractor: Bess Teslab

Field Contact: -

Contact Number: -

Start Date: -

End Date: -

Work Hours: -

Drafted by: SF
Scale: _____
Plan Number: _____
Job Number: _____
Permit #: _____

Phase: 2 of 3

Page: 2 of 3

Civil Engineer Stamp

Acknowledgement of Approval

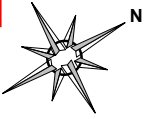
Signature: _____

Date: _____

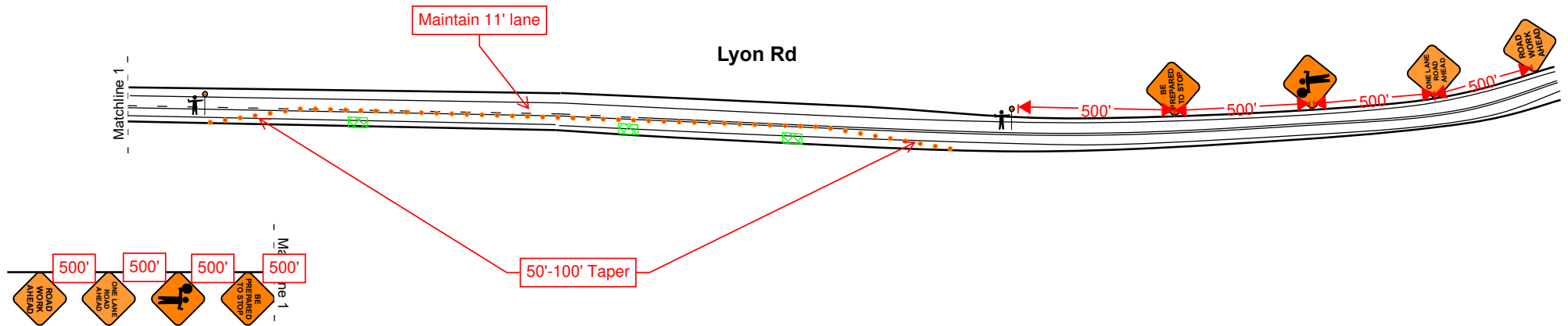
Bess Teslab

Lyon Road

EP 23-52



*Any traffic control devices outside the City's right-of-way requires approval from Solano County prior to starting work



Traffic control devices set up as rural roadway / 55 MPH

Permit Valid Through 4/05/2024



Contractor: Bess Teslab

Field Contact: -

Contact Number: -

Start Date: -

End Date: -

Work Hours: -

Drafted by: SF
Scale: _____
Plan Number: _____
Job Number: _____
Permit #: _____

Phase: 3 of 3

Page: 3 of 3

Civil Engineer Stamp

Acknowledgement of Approval

Signature: _____

Date: _____

NOTE:
FOR ACCURATE RIGHT OF WAY DATA, CONTACT
RIGHT OF WAY ENGINEERING AT THE DISTRICT OFFICE.

DIST	COUNTY	ROUTE	POST MILES TOTAL PROJECT	SHEET TOTAL No. SHEETS
04	SOL	80	22.1/23.0	A ZYX

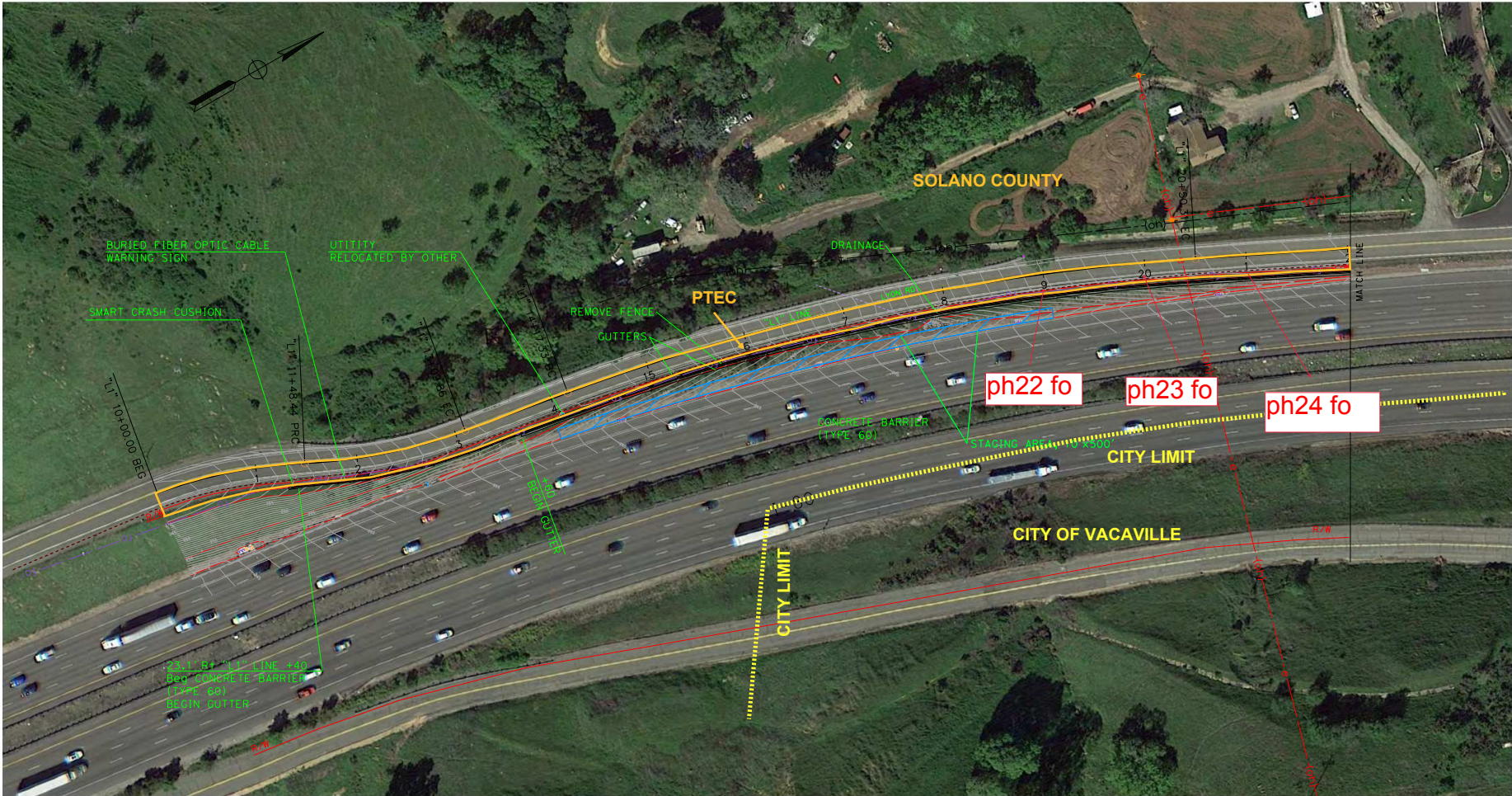
REGISTERED CIVIL ENGINEER DATE

X-X-XX

PLANS APPROVAL DATE

THE STATE OF CALIFORNIA OR ITS OFFICERS
OR AGENTS SHALL NOT BE RESPONSIBLE FOR
THE ACCURACY OR COMPLETENESS OF SCANNED
COPIES OF THIS PLAN SHEET.

REGISTERED PROFESSIONAL ENGINEER
No. CIVIL
STATE OF CALIFORNIA



LAYOUT
SCALE: 1" = 50'

FOR NOTES, ABBREVIATIONS
AND LEGEND, SEE SHEET L-1

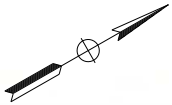
L-1

STATE OF CALIFORNIA - DEPARTMENT OF TRANSPORTATION	FUNCTIONAL SUPERVISOR	CALCULATED-DESIGNED BY	REVISOR	DATE
Caltrans	DESIGN	PETER BATIO	A	ABZY
		CHECKED BY	DATE	REVISOR
		JAMES LEY		

NOTE:
FOR ACCURATE RIGHT OF WAY DATA, CONTACT
RIGHT OF WAY ENGINEERING AT THE DISTRICT OFFICE.

DIST	COUNTY	ROUTE	POST MILES TOTAL PROJECT	SHEET NO.	TOTAL SHEETS
04	SOL	80	22.1/23.0	A	ZYX
REGISTERED CIVIL ENGINEER			DATE		
X-X-XX					
PLANS APPROVAL DATE					
<p>THE STATE OF CALIFORNIA OR ITS OFFICERS OR AGENTS SHALL NOT BE RESPONSIBLE FOR THE ACCURACY OR COMPLETENESS OF SCANNED COPIES OF THIS PLAN SHEET.</p>					

REGISTERED PROFESSIONAL ENGINEER
 No. _____
 EXP. _____
 CIVIL
 STATE OF CALIFORNIA



LAYOUT
SCALE: 1" = 50'

FOR NOTES, ABBREVIATIONS
AND LEGEND, SEE SHEET L-1

L-3

LAST REVISION DATE PLOTTED => 11/16/2022
11-10-22 TIME PLOTTED => 7:57:58 PM

Vicinity Map



Pothole Tabulation Sheet for CalTrans District 4

Locating Methods: (PH - Pothole); (GPR - Ground Penetrating Radar); (EP - Electronic Probing via Radio/ RF Detection, Magnetic Detection, PCM and others)

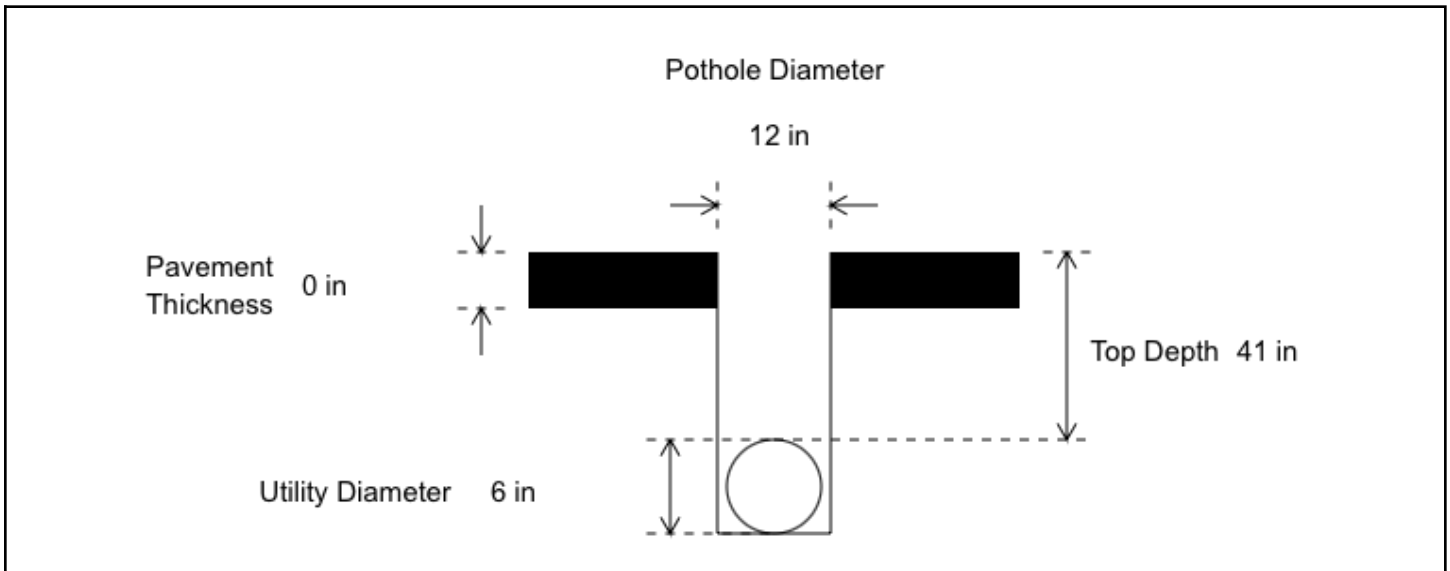
Pothole No.	Locating Method	Utility Type	Utility Material	Utility Diameter (in)	Soil Type	Paving Type	Paving Thickness (in)	Utility Depth (in)	Notes
22	PH	Unknown	PVC	6"	Dirt	Grass/Dirt	N/A	41"	Irrigation was exposed traveling N to S at 41" Unkown cable was exposed traveling N to S at 46" Unkown 2" pvc was exposed traveling N to S at 46"
23	PH	Fiber	PVC	6"	Dirt	Grass/Dirt	N/A	45"	Exposed irrigation traveling N to S Exposed 1" unkown cable traveling N to S at 48" Exposed a 2" pvc unkown traveling N to S at 44"
24	PH	Unknown	PVC	6"	Dirt	Grass/Dirt	N/A	41"	Per USA mark 6" is Solano Irrigation District Also exposed 2" PVC at 44" Also exposed a 1" cable at 47" Utilities traveling S to N
24A	PH	Unknown	PVC	6"	Dirt	Grass/Dirt	N/A	42"	Pothole was created by caltrans rep (thomas) to confirm utility from pothole 24. Irrigation was exposed traveling N to S at 42". Unkown 1" cable was exposed traveling N to S at 47"
25	PH	Fiber	N/A	Dry Hole	Dirt	Grass/Dirt	N/A	See Notes	Hit ground water at 43"
26	PH	Cancelled							Per Thomas, Cancel PH26 due to ground water at PH27 and at&t manhole near PH 26 full of water. Collect ED for PH26.
27	PH	Fiber	N/A	Dry Hole	Dirt	Grass/Dirt	N/A	See Notes	Hit ground water at 37". Per Thomas, Cancel PH26 and try PH25.
28	PH	Fiber	N/A	See Notes	Dirt	Grass/Dirt	N/A	33"	Duct was exposed at Top 33" Bottom 37"
30	PH	Fiber	N/A	See Notes	Dirt	Grass/Dirt	N/A	44"	Duct was exposed at 44"
31	PH	Fiber	N/A	See Notes	Dirt	Grass/Dirt	N/A	42"	Duct was exposed at 42"

Pothole No.	Locating Method	Utility Type	Utility Material	Utility Diameter (in)	Soil Type	Paving Type	Paving Thickness (in)	Utility Depth (in)	Notes
32	PH	Fiber	N/A	See Notes	Dirt	Grass/Dirt	N/A	43"	Duct was exposed at 43" Unable to expose edge on same pothole - refer to pothole 32A
32A	PH	Fiber	N/A	See Notes	Dirt	Grass/Dirt	N/A	43"	Pothole was created to find edge of duct - refer to pothole 32
22	EP	F/O	N/A					39"	Per Thomas, Ok to collect ED before mobilizing. AT&T did not respond to USA ticket request.
23	EP	F/O	N/A					33"	Per Thomas, Ok to collect ED before mobilizing. AT&T did not respond to USA ticket request.
24	EP	F/O	N/A					40"	Per Thomas, Ok to collect ED before mobilizing. AT&T did not respond to USA ticket request.
25	EP	F/O	N/A					43"	Per Thomas, Ok to collect ED before mobilizing. AT&T did not respond to USA ticket request.
26	EP	F/O	N/A					38"	Per Thomas, Ok to collect ED before mobilizing. AT&T did not respond to USA ticket request.
27	EP	F/O	N/A					39"	No Notes
28	EP	F/O	N/A					38	Per Thomas, Ok to collect ED before mobilizing. AT&T did not respond to USA ticket request.
30	EP	F/O	N/A					39"	Per Thomas, Ok to collect ED before mobilizing. AT&T did not respond to USA ticket request
31	EP	F/O	N/A					36"	Per Thomas, Ok to collect ED before mobilizing. AT&T did not respond to the USA ticket request.
32	EP	F/O	N/A					38"	Per Thomas, Ok to collect ED before mobilizing. AT&T did not respond to USA ticket request.

Potholing Form

Date 2024-03-08	Pothole Number 22	Utility Type Unknown
Material Type PVC	Surface Type Grass/Dirt	Core Drill Type No Core Drill
Soil Type Dirt	In a Duct? No	
Swing Tie 1 From fence 63" W to stake		
Swing Tie 2 From top of curb 25" E to stake		
Swing Tie 3		
Notes Irrigation was exposed traveling N to S @41" Unknown cable was exposed traveling N to S @46" Unknown 2" pvc was exposed traveling N to S @46"		

Transverse View



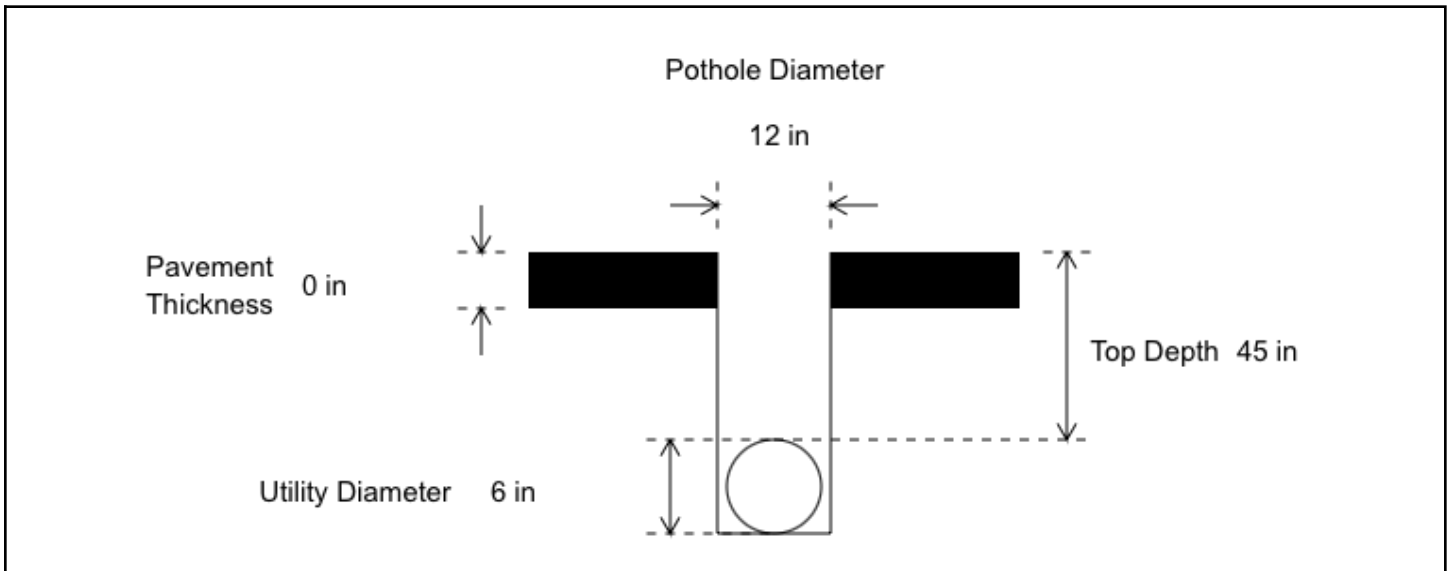


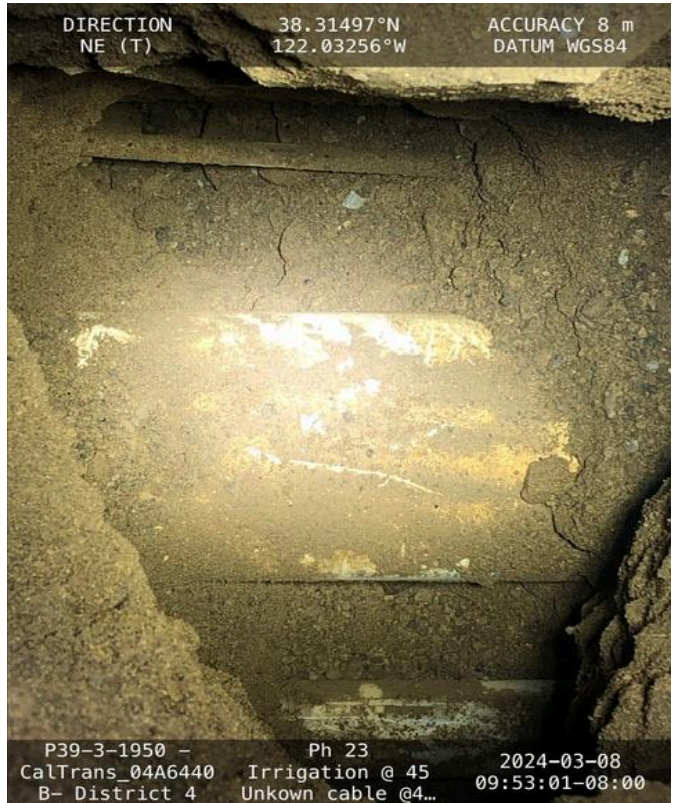
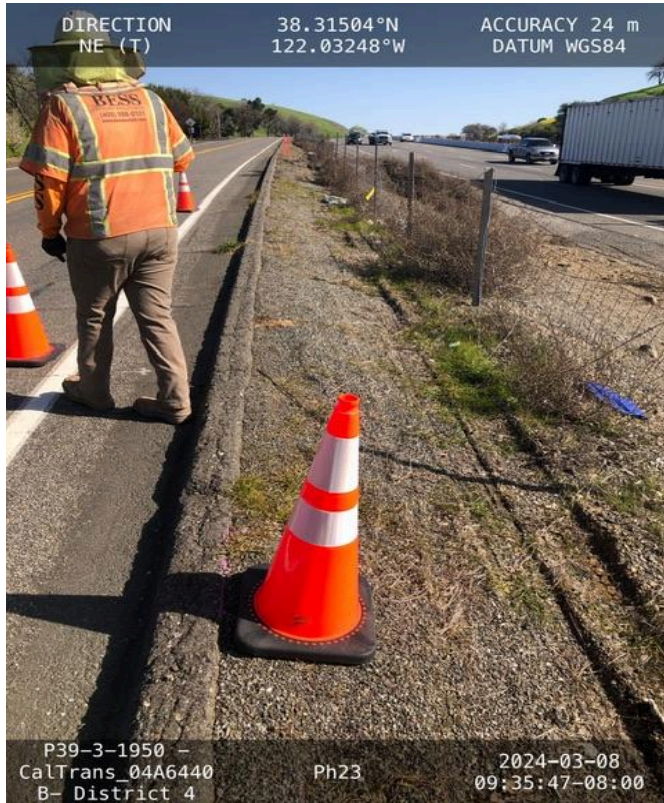


Potholing Form

Date 2024-03-08	Pothole Number 23	Utility Type Fiber
Material Type PVC	Surface Type Grass/Dirt	Core Drill Type No Core Drill
Soil Type Dirt	In a Duct? No	
Swing Tie 1 From fence 60" W to stake		
Swing Tie 2 From top of curb 25" E to stake		
Swing Tie 3		
Notes Exposed irrigation traveling N to S Exposed 1" unkown cable traveling N to S @ 48" Exposed a 2" pvc unkown traveling N to S @44"		

Transverse View



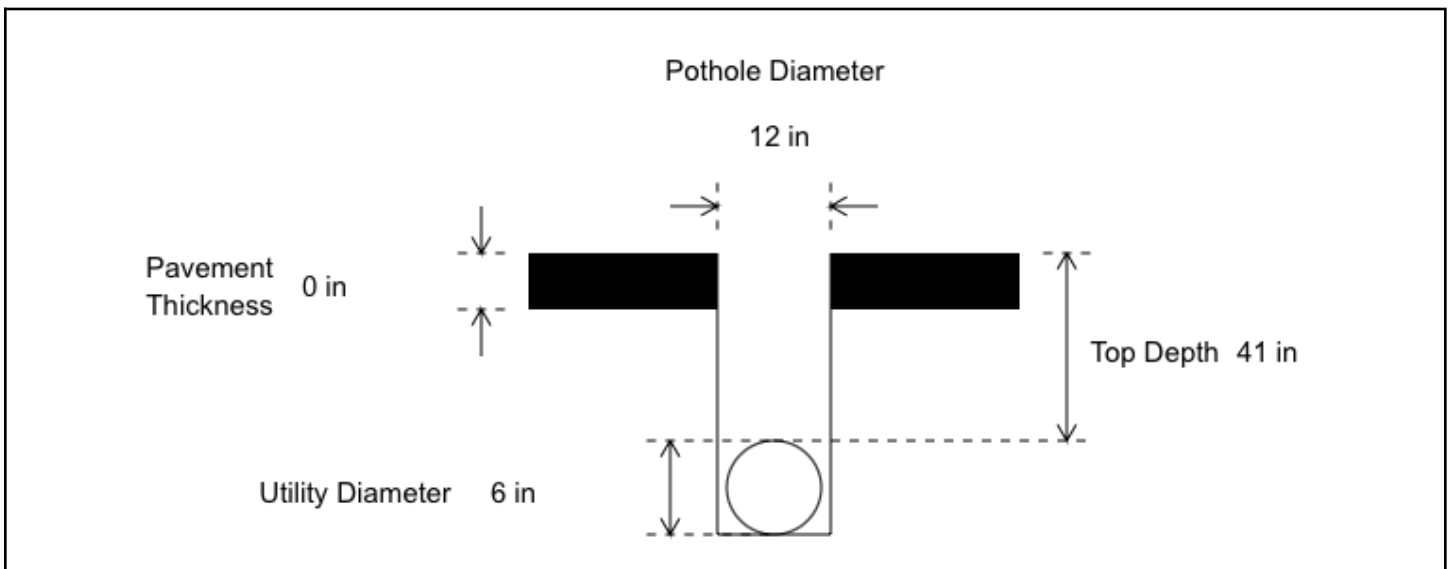




Potholing Form

Date 2024-03-08	Pothole Number 24	Utility Type Unknown
Material Type PVC	Surface Type Grass/Dirt	Core Drill Type No Core Drill
Soil Type Dirt	In a Duct? No	
Swing Tie 1 From fence 69" W to stake		
Swing Tie 2 From top of curb 15" E to stake		
Swing Tie 3		
Notes Per USA mark 6" is Solano Irrigation District Also exposed 2" PVC @ 44" Also exposed a 1" cable @47" Utilities traveling S to N		

Transverse View



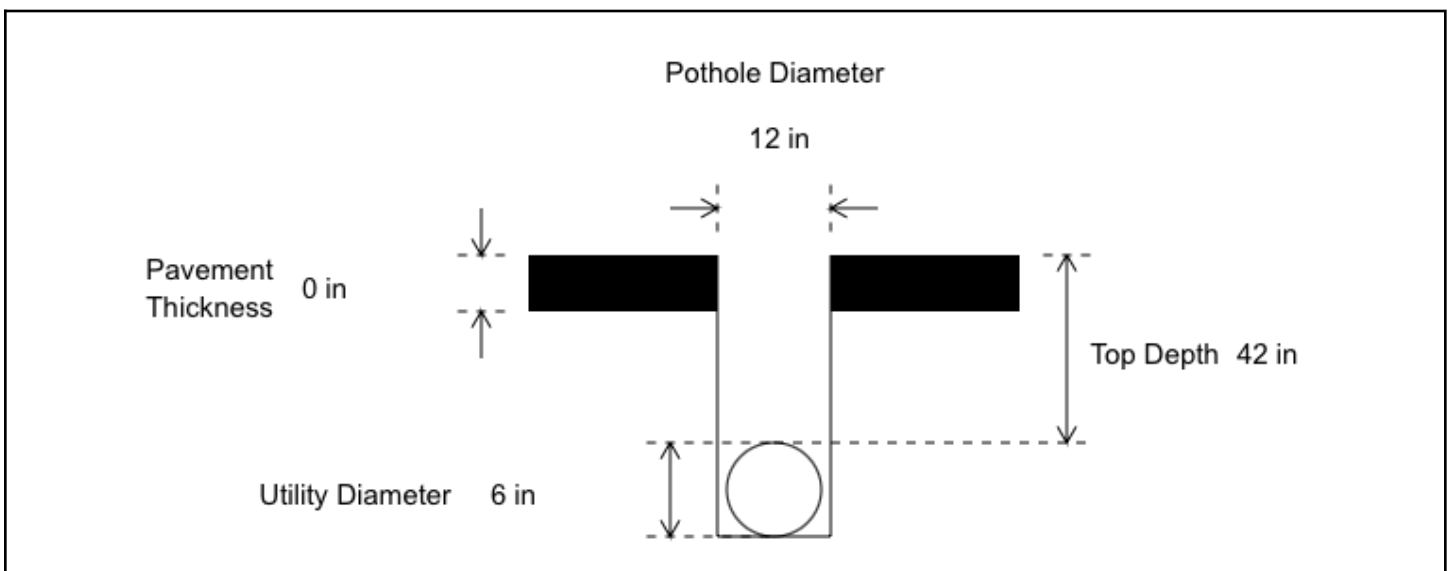


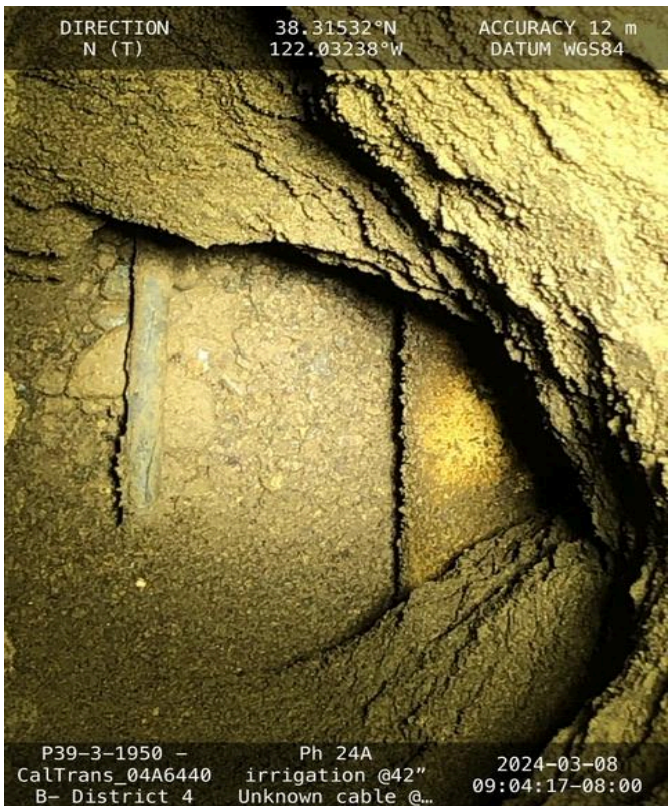


Potholing Form

Date 2024-03-08	Pothole Number 24A	Utility Type Unknown
Material Type PVC	Surface Type Grass/Dirt	Core Drill Type No Core Drill
Soil Type Dirt	In a Duct? No	
Swing Tie 1 From top of curb 16" E to stake		
Swing Tie 2 From fence 70" W to stake		
Swing Tie 3		
Notes <p>Pothole was created by caltrans rep (thomas) to confirm utility from pothole 24</p> <p>Irrigation was exposed traveling N to S @42"</p> <p>Unkown 1" cable was exposed traveling N to S @47"</p>		

Transverse View



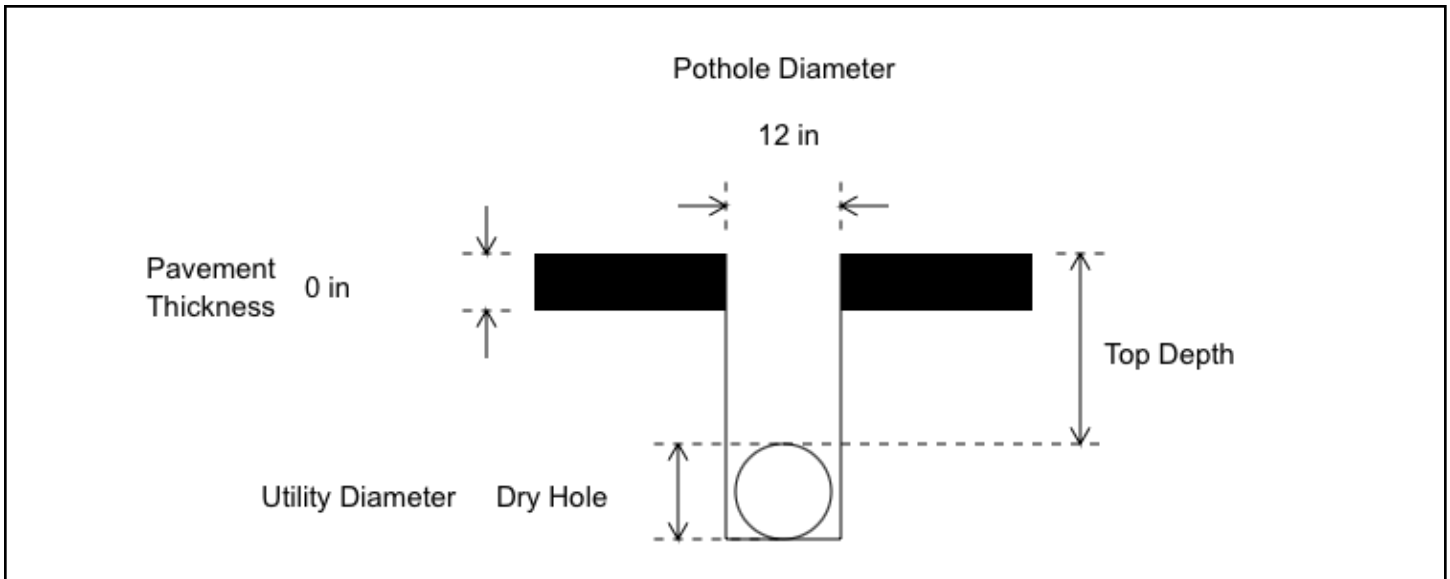




Potholing Form

Date 2024-03-07	Pothole Number 25	Utility Type Fiber
Material Type N-A	Surface Type Grass/Dirt	Core Drill Type No Core Drill
Soil Type Dirt	In a Duct? No	
Swing Tie 1 From fogline 45" E to stake		
Swing Tie 2 From fence 76" W to stake		
Swing Tie 3		
Notes Hit ground water @43"		

Transverse View







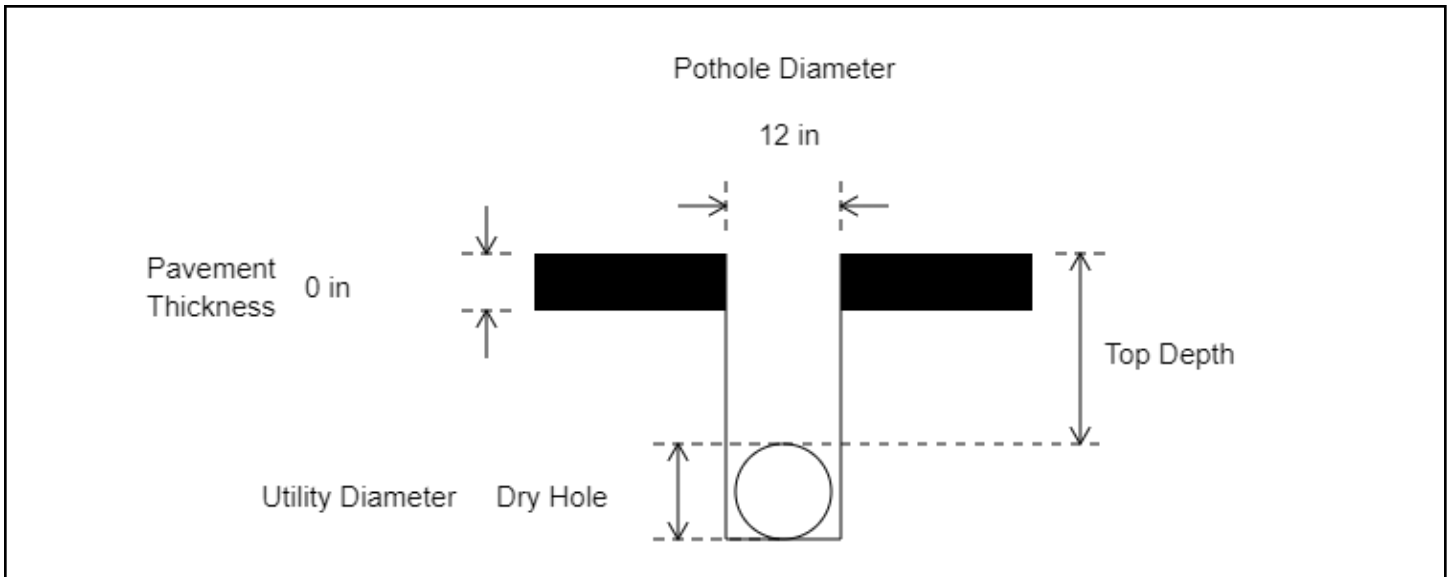
Potholing Form

Date 2024-03-07	Pothole Number 26	Utility Type
Material Type	Surface Type	Core Drill Type
Soil Type	In a Duct?	
Swing Tie 1		
Swing Tie 2		
Swing Tie 3		
Notes Per Thomas, Cancel PH26 due to ground water at PH27 and at&t manhole near PH 26 full of water. Collect ED for PH26.		

Potholing Form

Date 2024-03-07	Pothole Number 27	Utility Type Fiber
Material Type N-A	Surface Type Grass/Dirt	Core Drill Type No Core Drill
Soil Type Dirt	In a Duct? No	
Swing Tie 1 From fogline 55" E to stake		
Swing Tie 2 From fence 69" W to stake		
Swing Tie 3		
Notes Hit ground water @ 37". Per Thomas, Cancel PH26 and try PH25.		

Transverse View



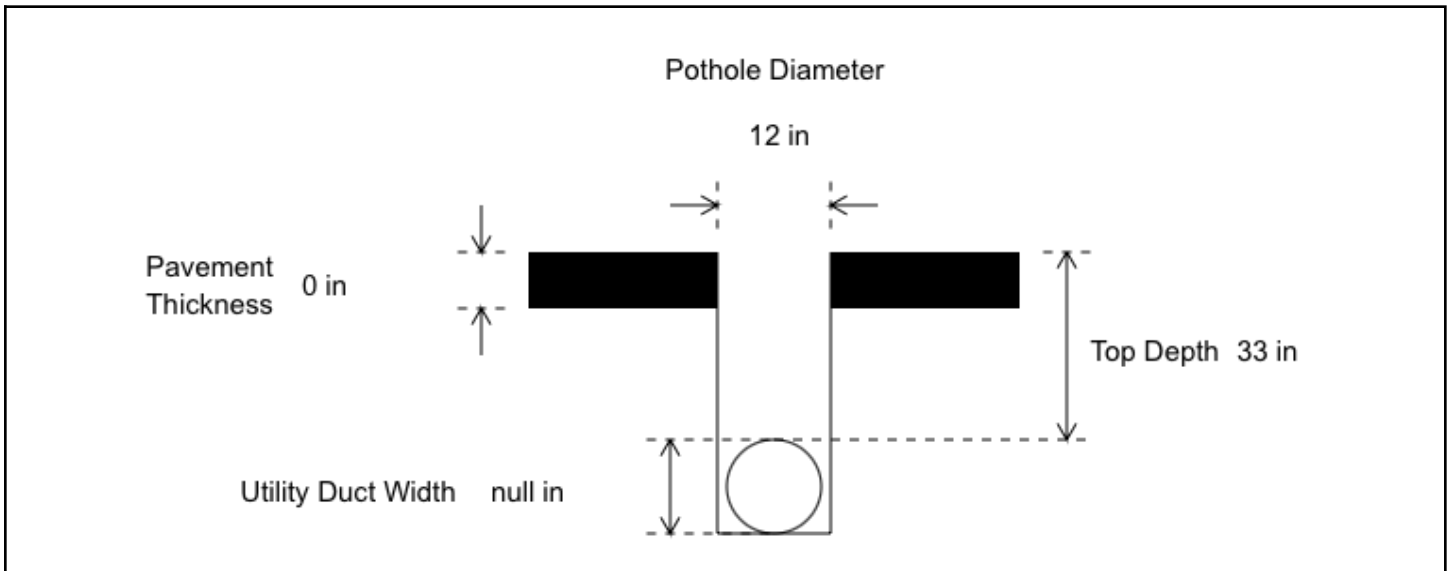




Potholing Form

Date 2024-03-07	Pothole Number 28	Utility Type Fiber
Material Type N-A	Surface Type Grass/Dirt	Core Drill Type No Core Drill
Soil Type Dirt	In a Duct? Yes	
Swing Tie 1 From fogline 59" E to stake		
Swing Tie 2 From fence 65" W to stake		
Swing Tie 3		
Notes <div>Duct was exposed @</div> <div>Top 33"</div> <div>Bottom 37"</div>		

Transverse View



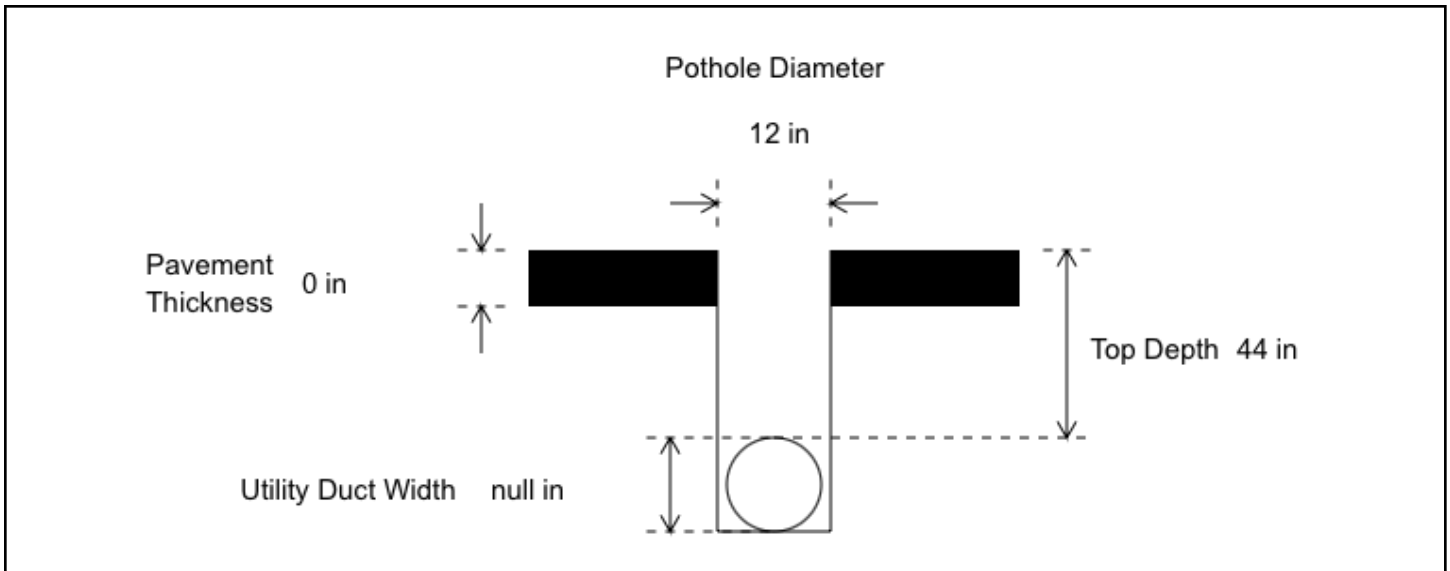




Potholing Form

Date 2024-03-07	Pothole Number 30	Utility Type Fiber
Material Type N-A	Surface Type Grass/Dirt	Core Drill Type No Core Drill
Soil Type Dirt	In a Duct? Yes	
Swing Tie 1 From fogline 52" E to stake		
Swing Tie 2 From fence 61" W to stake		
Swing Tie 3		
Notes Duct was exposed @ 44"		

Transverse View

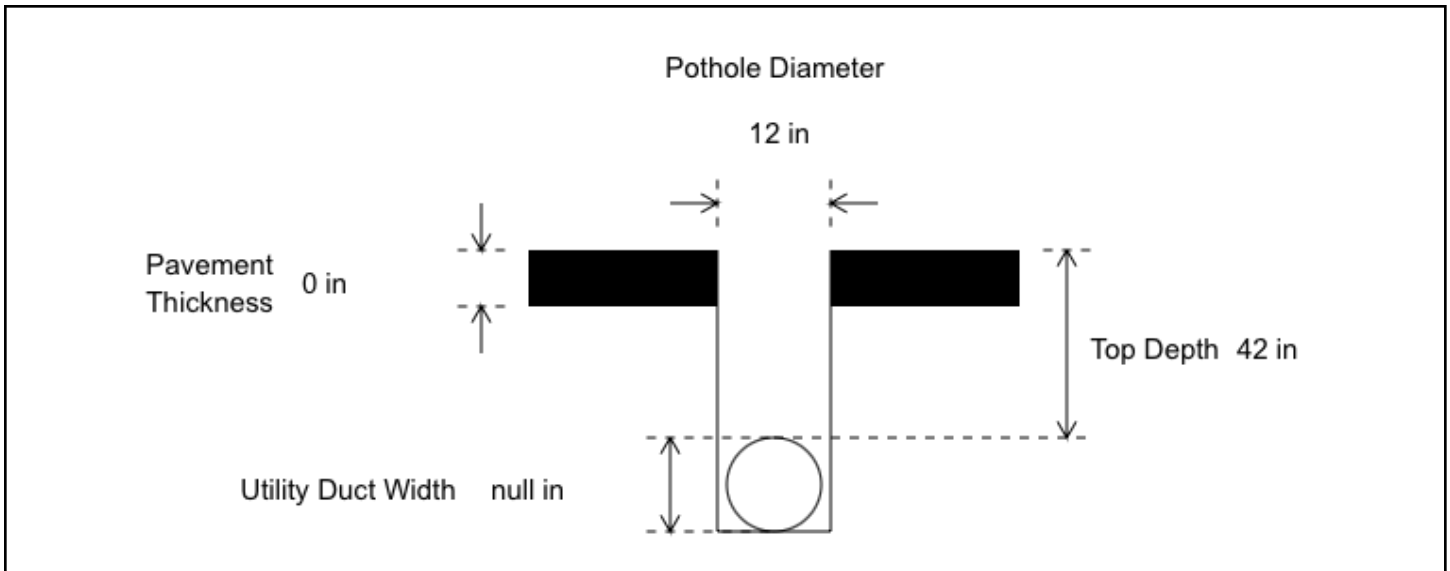




Potholing Form

Date 2024-03-07	Pothole Number 31	Utility Type Fiber
Material Type N-A	Surface Type Grass/Dirt	Core Drill Type No Core Drill
Soil Type Dirt	In a Duct? Yes	
Swing Tie 1 From fogline 48" E to stake		
Swing Tie 2 From fence 72" W to stake		
Swing Tie 3		
Notes Duct was exposed @42"		

Transverse View



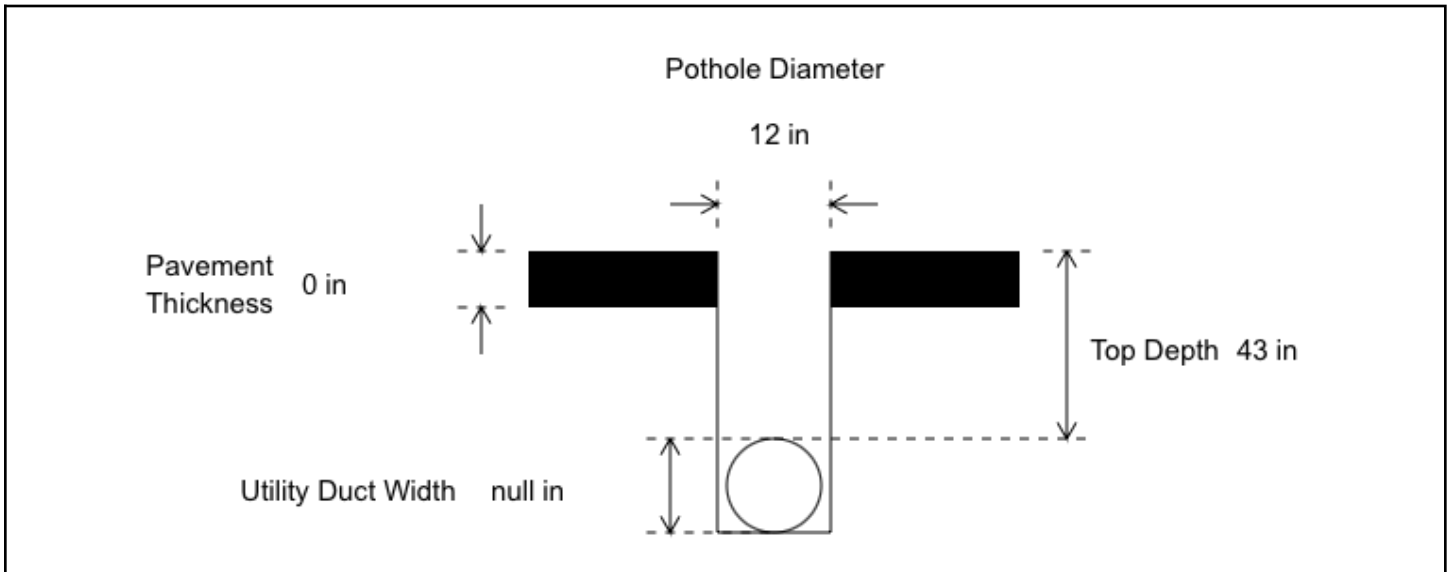




Potholing Form

Date 2024-03-07	Pothole Number 32	Utility Type Fiber
Material Type N—	Surface Type Grass/Dirt	Core Drill Type No Core Drill
Soil Type Dirt	In a Duct? Yes	
Swing Tie 1 From fogline 46" E to stake		
Swing Tie 2 From fence 70" W to stake		
Swing Tie 3		
Notes Duct was exposed @ 43" Unable to expose edge on same pothole - refer to pothole 32A		

Transverse View



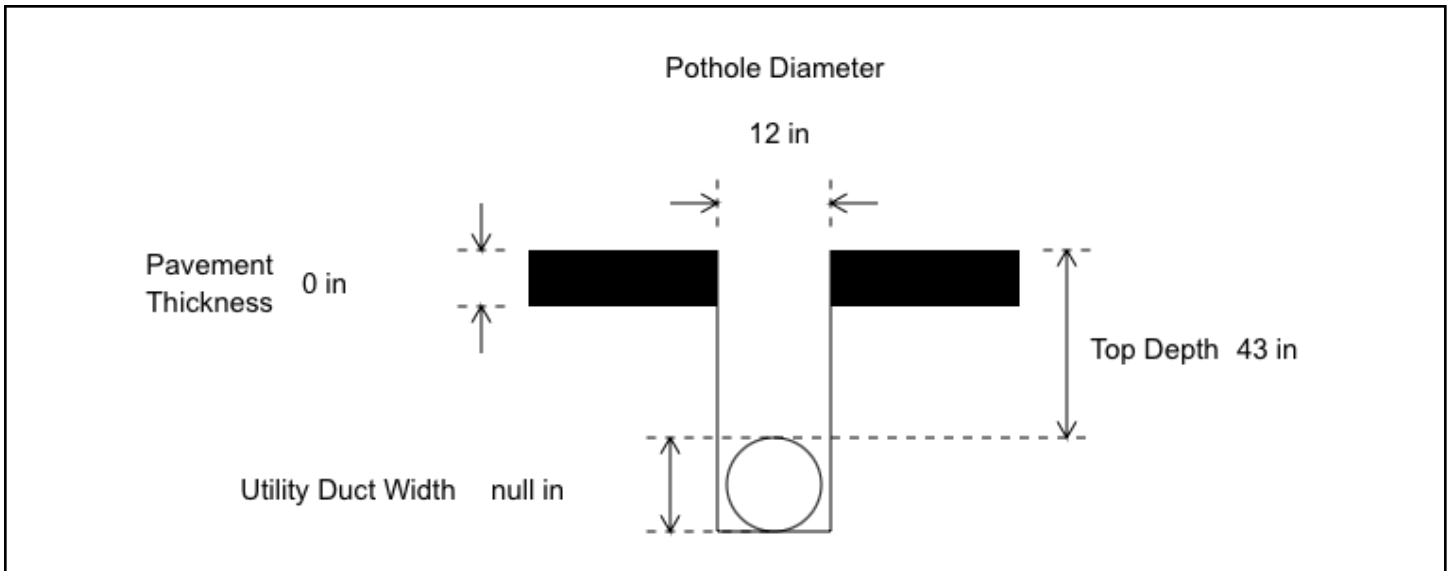




Potholing Form

Date 2024-03-07	Pothole Number 32A	Utility Type Fiber
Material Type N-A	Surface Type Grass/Dirt	Core Drill Type No Core Drill
Soil Type Dirt	In a Duct? Yes	
Swing Tie 1 From fence 42" W to stake		
Swing Tie 2 From fogline 75" E to stake		
Swing Tie 3		
Notes Pothole was created to find edge of duct - refer to pothole 32		

Transverse View







ELECTRIC POTHOLE FORM

EP No.	22
Coordniates	38.314781855945256, -122.03269061130378
Utility Type	F/O
Depth	39
Swing Tie 1	From face of curb 39" W to pk nail
Swing Tie 2	From yellow lane divider line 124"E to pk nail
Swing Tie 3	.
Notes	Per Thomas, Ok to collect ED before mobilizing. AT&T did not respond to USA ticket request.



ELECTRIC POTHOLE FORM

EP No.	ED-23
Coordniates	38.315270490070816, -122.03241830130142
Utility Type	F/O
Depth	33
Swing Tie 1	From yellow lane divider line 130" E to pk nail
Swing Tie 2	From face of curb 33" W to pk nail
Swing Tie 3	.
Notes	Per Thomas, Ok to collect ED before mobilizing. AT&T did not respond to USA ticket request.



ELECTRIC POTHOLE FORM

EP No.	ED-24
Coordniates	38.31577435099194, -122.03213843167063
Utility Type	F/O
Depth	40
Swing Tie 1	From yellow lane divider line 132" E to pk nail
Swing Tie 2	From face of curb 38"W to pk nail
Swing Tie 3	.
Notes	Per Thomas, Ok to collect ED before mobilizing. AT&T did not respond to USA ticket request.



ELECTRIC POTHOLE FORM

EP No.	25
Coordniates	38.31893594858554, -122.02943492948815
Utility Type	F/O
Depth	43
Swing Tie 1	.
Swing Tie 2	.
Swing Tie 3	.
Notes	Per Thomas, Ok to collect ED before mobilizing. AT&T did not respond to USA ticket request.



ELECTRIC POTHOLE FORM

EP No.	26
Coordniates	38.31531469196637, -122.03248866769053
Utility Type	F/O
Depth	38
Swing Tie 1	From fogline 55" SE to stake
Swing Tie 2	From fence 65" W to stake
Swing Tie 3	.
Notes	Per Thomas, Ok to collect ED before mobilizing. AT&T did not respond to USA ticket request.



ELECTRIC POTHOLE FORM

EP No.	27
Coordniates	38.32050550335844, -122.0280814570643
Utility Type	F/O
Depth	39
Swing Tie 1	.
Swing Tie 2	.
Swing Tie 3	.
Notes	.



ELECTRIC POTHOLE FORM

EP No.	28
Coordniates	38.320529633237506, -122.02804352168182
Utility Type	F/O
Depth	38
Swing Tie 1	.
Swing Tie 2	.
Swing Tie 3	.
Notes	Per Thomas, Ok to collect ED before mobilizing. AT&T did not respond to USA ticket request.



ELECTRIC POTHOLE FORM

EP No.	30
Coordniates	38.32149263009287, -122.02719435107153
Utility Type	F/O
Depth	39
Swing Tie 1	.
Swing Tie 2	.
Swing Tie 3	.
Notes	Per Thomas, Ok to collect ED before mobilizing. AT&T did not respond to USA ticket request.



ELECTRIC POTHOLE FORM

EP No.	31
Coordniates	38.321846814842175, -122.02685675124928
Utility Type	F/O
Depth	36
Swing Tie 1	.
Swing Tie 2	.
Swing Tie 3	.
Notes	Per Thomas, Ok to collect ED before mobilizing. AT&T did not respond to the USA ticket request.



ELECTRIC POTHOLE FORM

EP No.	32
Coordniates	38.32226274704175, -122.02654346069068
Utility Type	F/O
Depth	38
Swing Tie 1	.
Swing Tie 2	.
Swing Tie 3	.
Notes	Per Thomas, Ok to collect ED before mobilizing. AT&T did not respond to USA ticket request.

